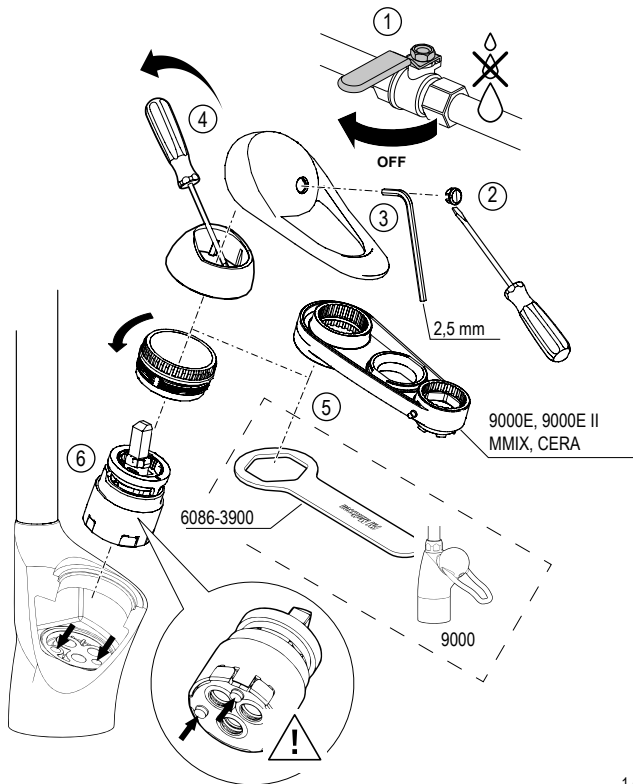


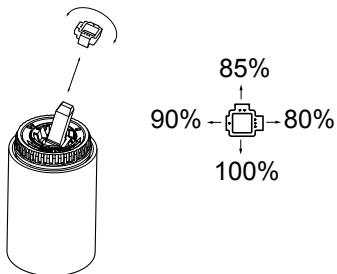
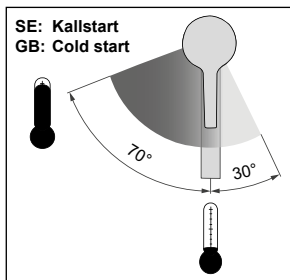
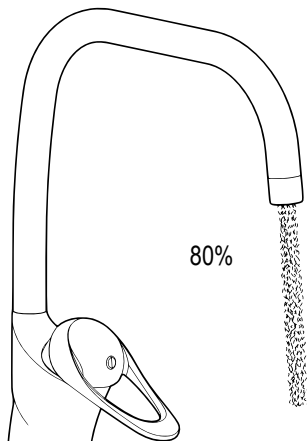
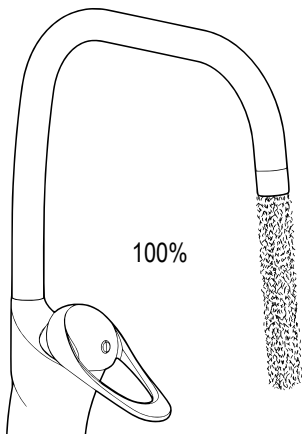
Till ett greppsblandare 9000E, Mora MMIX ,Cera.

Instruktion:1003492 - Rev. 004



SE: Flödesbegränsning, % av maximalt flöde

GB: Flow limiter, % of maximum flow



SE: Temperaturspär. Artikelnr. 8060-7000 och 8060-7010 är förinställda från fabrik till max. 55°C.

GB: Temperature limiter. Part No. 8060-7000 and 8060-7010 are factory preset to a maximum of 55°C.

