
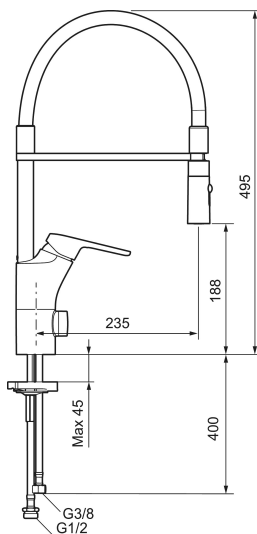




Unique characteristics

Backflow protection unit type 



SILJAN flexi kitchen mixer

SILJAN flexi mixers boast FM Mattsson's well-known functions such as cold start, soft closing, flow control, a temperature limiter and an energy- and water-saving aerator. In addition to these benefits, SILJAN flexi mixers also have a detachable nozzle and a choice of jet settings.

Article number: 83110010 Flow 3 bar: 10.3 l/m

Description: Chrome

- Cold Start
- Ceramic cartridge with soft closing function
- Adjustable flow control and temperature limiter
- Hose, limitation part for 60°, 85°, 110° or 360° included
- Nozzle with concentrated jet and handshower
- With dish washer valve, switchable between cold and hot water. Pre-set on cold water
- Soft PEX[®] hoses with 3/8" connecting nut (stainless steel braided)
- Approved non-return valves, EN-Standard EN1717
- Hole diameter Ø34-37 mm